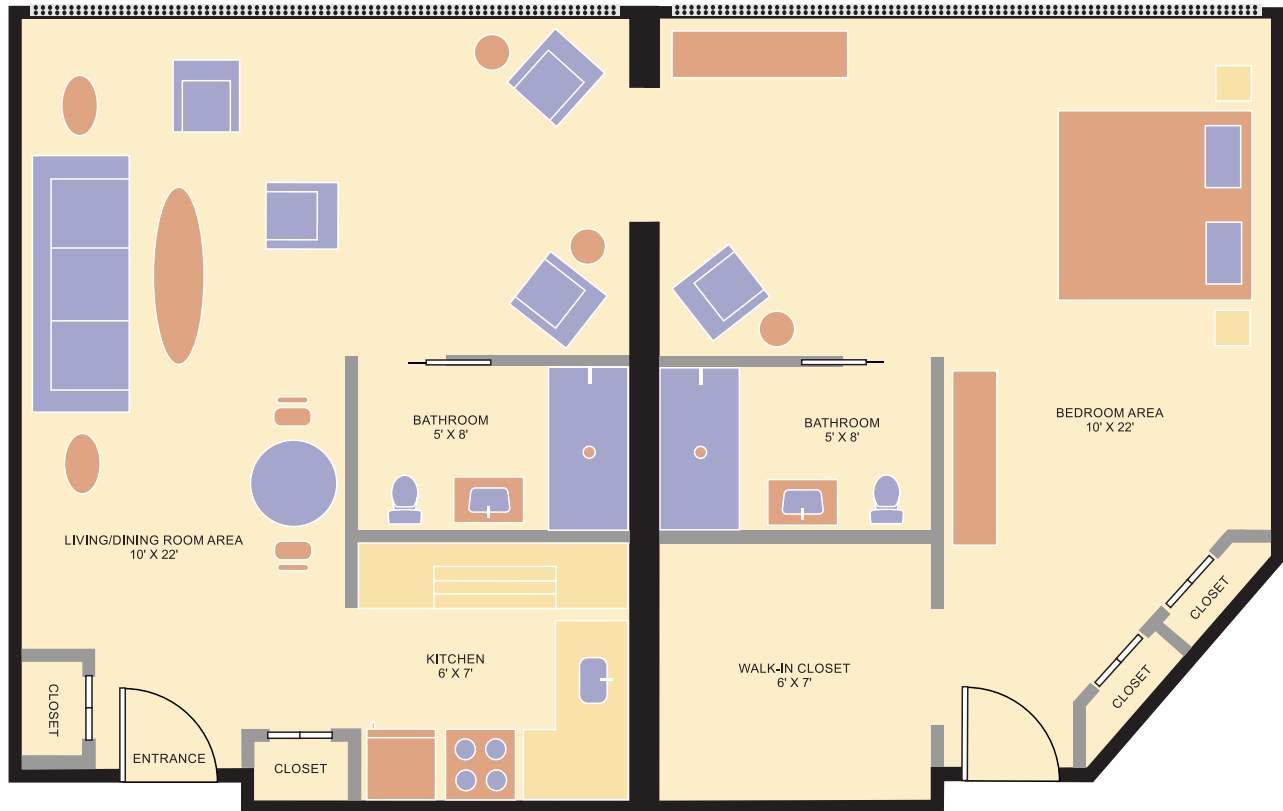


The Glasgow

Large Double
888 Square Feet



Apartments Feature:

- Full kitchen
- Two private bathrooms with walk-in shower and grab bars
- Basic cable TV
- *Lifeline* emergency system with 24-hr monitored services
- Individually controlled heating and air conditioning
- Fire/smoke detectors and sprinkler system
- Window coverings
- Wall-to-wall carpeting

Rates Include:

- Two daily kosher (COR) meals
- Weekly housekeeping and linen services
- 24 hour on-site health centre (six physicians, psychiatrist, nurses, social workers, pharmacist, dietician, occupational therapist and chiroprapist)
- Complimentary laundry room on each floor
- Social, spiritual, recreational, mind and body fitness and swimming programs
- Membership in the Wagman Community Centre
- Shuttle bus to Bathurst Street and around the Baycrest campus
- Access by referral to services prescribed by Baycrest professionals. (i.e. dentistry, ophthalmology, audiology, foot care, etc.)